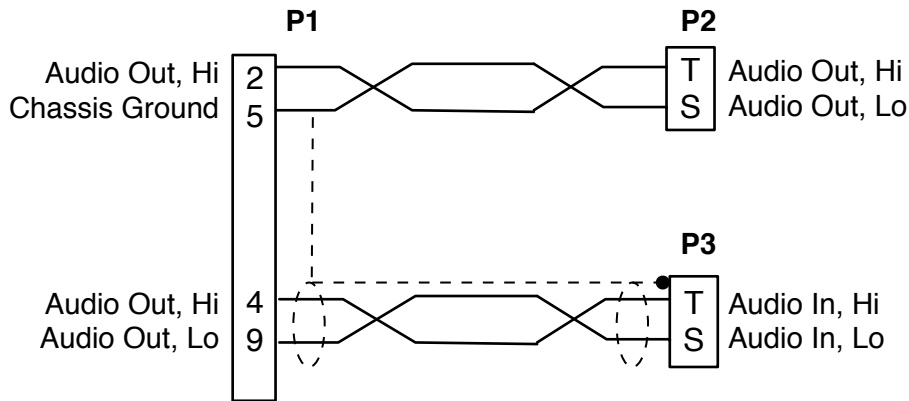



Wiring Information:



Assembly Notes:

1. P1: Use Male, metal DB-9 connector. Connector to include backshell and male screwlock assembly
2. P2, P3: Use phono plug - Switchcraft P/N 3502A or equivalent.
3. P3: Use high quality, low capacitance, individually shielded, twisted pair, audio cable.
4. Apply shrink tube if necessary to fill P2 and P3 cable entry hole.
5. Cable length "L" specified by value of L in part number. Units are feet.
6. Twisted pair configuration as shown.
7. Add 6 inches of appropriate color, durable shrink tube around cable pair as shown
8. Tie and solder shield to P1 connector case. Use chemical or abrasion technique to ensure good bonding and conductivity

Rev	Date	Originator	Description
-	10-26-00	DEC	Original release
A	9-20-01	DEC	Configured for single-ended load
02	4-7-09	CJA	Added information table, converted to graffle

		ADVANCED SIMULATION TECHNOLOGY inc. 500A Huntmar Park Drive, Herndon, VA 20170 www.asti-usa.com
Cage Code	OVFW3	
Title	Audio Interface Cable - RIU to Dual Phono Plug	
Dwg #	CA-D9M-Y-R2M-R2M-L-A_02	
Sheet	1 of 1	

Industry connector Sub Group	ASTi Part Number Sub Group	Source Device	ASTi Part Number	Current Revision Number	Description & Case Use	Special Notes
DB9	D9*	RIU, ACE-RIU	CA-D9M-Y-R2M-R2M-L-A	02		