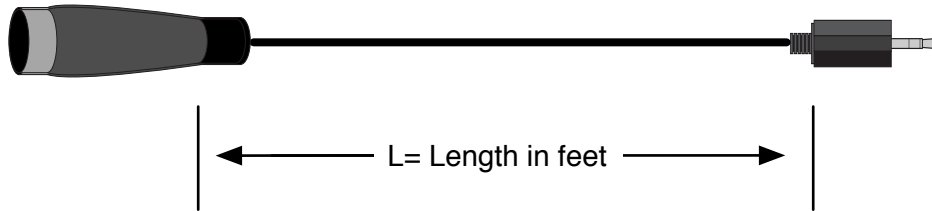
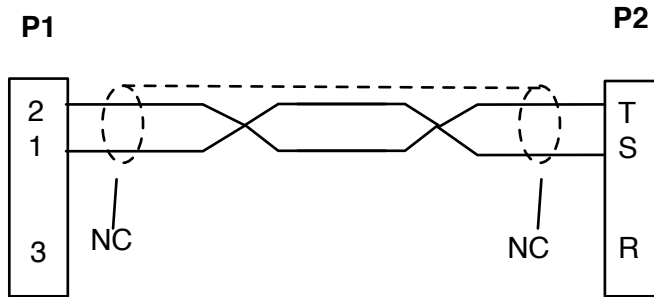


**Cable Layout:**

**P/N: CA-X3M-P3M-L-A\_02**




**Wiring Information:**



***Pins Not Shown Are Unused***

- Assembly Notes:**
1. P1: Use male, 3pin, In-Line XLR connector.
  2. P2: Use (Switchcraft P/N 35HDNN or equivalent). Equivalent part will include: nickel plated / knurled shell, 3.5mm stereo (TRS) plug, solder lugs, cable clamp
  3. Use high quality, low capacitance, individually shielded, twisted pair, audio cable.
  4. Apply shrink tube if necessary to fill P@ cable entry hole.
  5. Cable length specified by value of L in part number. Units are feet.
  6. Twisted pair configuration as shown.
  7. Leave shield unconnected but accessible at both P1 and P2. Insulate drain wire to ensure it does not touch other wires.

| Rev | Date     | Originator | Description                                        |
|-----|----------|------------|----------------------------------------------------|
| n/a | 04/11/01 | DEC        | Original Release                                   |
| 02  | 04/10/09 | JBN        | converted to .graffle and made pretty; added chart |
|     |          |            |                                                    |
|     |          |            |                                                    |
|     |          |            |                                                    |
|     |          |            |                                                    |

|                                                                                                                                                                                                                                          |                                                      |
|------------------------------------------------------------------------------------------------------------------------------------------------------------------------------------------------------------------------------------------|------------------------------------------------------|
|  <b>ADVANCED SIMULATION TECHNOLOGY inc.</b><br>500A Huntmar Park Drive, Herndon, VA 20170<br><a href="http://www.asti-usa.com">www.asti-usa.com</a> |                                                      |
| Cage Code                                                                                                                                                                                                                                | OVPW3                                                |
| Title                                                                                                                                                                                                                                    | Audio Interface Cable - 3pin Male XLR to 3.5 mm Plug |
| Dwg #                                                                                                                                                                                                                                    | CA-X3M-P3M-L-A_02                                    |
| Sheet                                                                                                                                                                                                                                    | 1 of 1                                               |

| Industry Connector Sub Group | ASTi Part Number Sub Group | Source Device | ASTi Part Number | Current Revision Number | Description & Use Case | Special Notes |
|------------------------------|----------------------------|---------------|------------------|-------------------------|------------------------|---------------|
| XLR3                         | X3*                        |               | CA-X3M-P3M-L-A   | 02                      |                        |               |